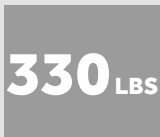


ORWAK COMPACT 3150

The ORWAK COMPACT 3150 is perfect for both cardboard and plastic and offers strong compaction on the spot: compact machine design, yet impressive volume reduction and a bale weight of up to 330 lbs. For installations in a wide variety of locations, the 3150 is a single phase unit.

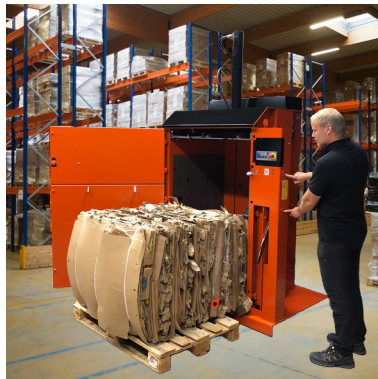
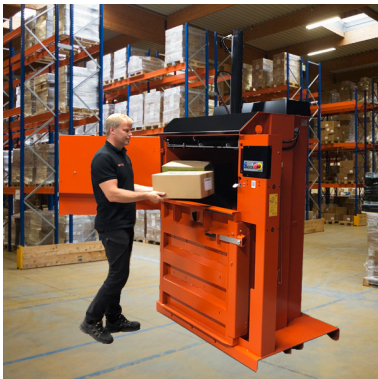


**SMALL
FOOTPRINT**



**BALE WEIGHT
CARDBOARD**

ORWAK BENEFITS



MORE PRODUCTIVE USE OF TIME

Less time spent on waste handling, more time for your core activities!

MORE SPACE & ORDER

Our balers rapidly minimize the space the waste takes up, keeping aisles free and tidy.

LESS COSTS, MORE VALUE

More compaction = less waste volume to transport. Fewer transports required results in lower transportation costs and reduced CO₂ emissions. Sorting at source yields a higher quality of waste material for recycling.

WHY ORWAK COMPACT?

- Strong compaction on the spot! Requires little space, yet provides effective volume reduction
- Easy-to-handle light weight bales
- The best choice for small to medium size volumes of cardboard and plastic

ORWAK
PART OF Sulo GROUP

ORWAK COMPACT 3150

Single phase baler that produces up to 330 lbs bales

SMART DESIGN

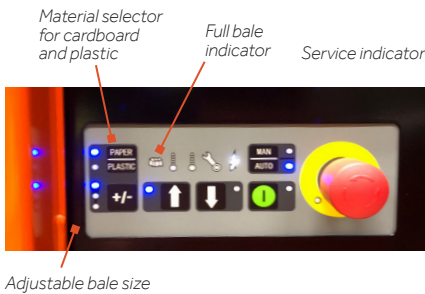
Smart machine design for easy transportation and installation.

AUTOSTART FOR EFFICIENT COMPACTION

An autostart function allows the baler to start compacting the material as soon as you close the door.

BALE EJECTION

The bales weigh up to 330 lbs and are easily removed thanks to a semi-automatic bale ejection function.



- User-friendly panel
- Autostart
- Adjustable bale height in three sizes

ORWAK COMPACT 3150 IS OPTIMIZED FOR:

PAPER

- Cardboard
- Shredded paper

PLASTIC FOIL

- Shrink film
- Plastic bags

OTHER METALS

- Steel straps

OTHER PLASTICS

- Plastic straps

SILENT OPERATION CONTRIBUTES TO A BETTER WORKING ENVIRONMENT

Thanks to a silent type of hydraulics, the sound emission is low, which contributes to improving the working environment for the employees and is an important feature if the baler is installed close to customers.

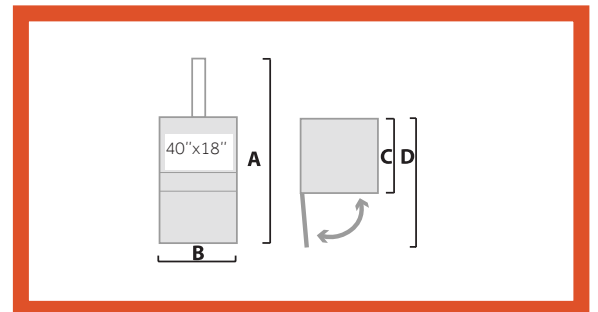
ORWAK CONNECT COMMUNICATION

The COMPACT balers are ready to communicate when choosing the option Orwak Connect. It is a modem-based communication service enabling the baler to send updates and alerts to the caretaker as well as vital information and bale statistics to the web portal.

Complies with the EN 16500:2014 safety requirement standard for vertical balers

DIMENSIONS & SPECIFICATIONS

| DIMENSIONS | | | | |
|------------|-----|-----|-----|------------------|
| A | B | C | D | TRANSPORT-HEIGHT |
| 8'4" | 54" | 40" | 79" | 6'7" |



| TECHNICAL SPECIFICATIONS | | | | | | | | |
|---------------------------|------------|----------------------------------|---|--|----------------|-------------|------------------|---------------------------------------|
| LOADING APERTURE | CYCLE TIME | PRESS FORCE | BALE SIZE | BALE WEIGHT | MACHINE WEIGHT | NOISE LEVEL | PROTECTION CLASS | OPERATING POWER |
| Width: 40" Height: 18" | 40 secs | HP: 17,637 lbs LP: 11,023 lbs | Width: 40" Depth: 32" Height: 32" | Cardboard: Up to 330 lbs Plastic: Up to 420 lbs | 1587 lbs | 62.3 db (A) | IP 55 | Single Phase 115 V, 60 Hz, 15 A |

We reserve the right to make changes to specifications without prior notice. Bale/bag/bin weights are dependent upon material type.

ORWAK NORTH AMERICA, INC.

9200 Globe Center Drive, Suite 130
Morrisville
NC 27560, USA
Phone: +1-800-747-0449
Email: info@orwakbalers.com

ORWAKBALERS.COM

