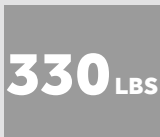


# ORWAK COMPACT 3150

The ORWAK COMPACT 3150 is perfect for both cardboard and plastic and offers strong compaction on the spot: compact machine design, yet impressive volume reduction and a bale weight of up to 330 lbs. For installations in a wide variety of locations, the 3150 is a single phase unit.

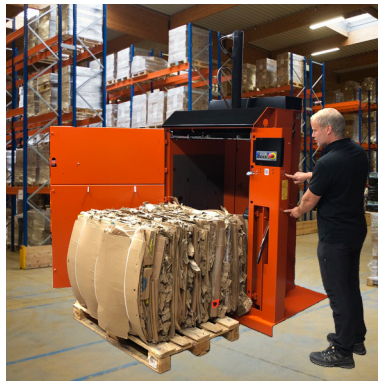


**SMALL  
FOOTPRINT**



**BALE WEIGHT  
CARDBOARD**

## ORWAK BENEFITS



### **MORE PRODUCTIVE USE OF TIME**

Less time spent on waste handling, more time for your core activities!

### **MORE SPACE & ORDER**

Our balers rapidly minimize the space the waste takes up, keeping aisles free and tidy.

### **LESS COSTS, MORE VALUE**

More compaction = less waste volume to transport. Fewer transports required results in lower transportation costs and reduced CO<sub>2</sub> emissions. Sorting at source yields a higher quality of waste material for recycling.

## WHY ORWAK COMPACT?

- Strong compaction on the spot! Requires little space, yet provides effective volume reduction
- Easy-to-handle light weight bales
- The best choice for small to medium size volumes of cardboard and plastic

**ORWAK**  
PART OF SULO GROUP

# ORWAK COMPACT 3150

Single phase baler that produces up to 330 lbs bales

## SMART DESIGN

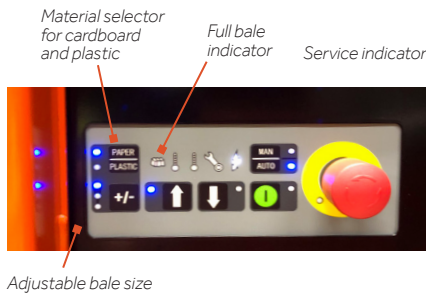
Smart machine design for easy transportation and installation.

## AUTOSTART FOR EFFICIENT COMPACTION

An autostart function allows the baler to start compacting the material as soon as you close the door.

## BALE EJECTION

The bales weigh up to 330 lbs and are easily removed thanks to a semi-automatic bale ejection function.



- User-friendly panel
- Autostart
- Adjustable bale height in three sizes

## ORWAK COMPACT 3150 IS OPTIMIZED FOR:

### PAPER

- Cardboard
- Shredded paper

### PLASTIC FOIL

- Shrink film
- Plastic bags

### OTHER METALS

- Steel straps

### OTHER PLASTICS

- Plastic straps

## SILENT OPERATION CONTRIBUTES TO A BETTER WORKING ENVIRONMENT

Thanks to a silent type of hydraulics, the sound emission is low, which contributes to improving the working environment for the employees and is an important feature if the baler is installed close to customers.

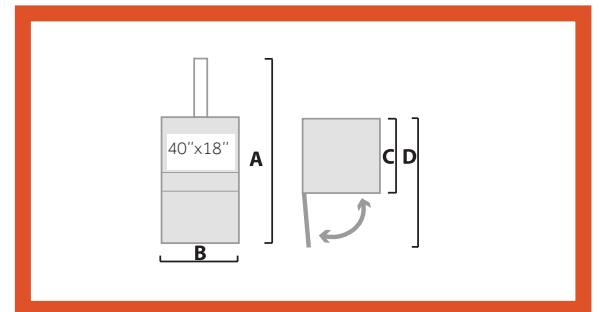
## ORWAK CONNECT COMMUNICATION

The COMPACT balers are ready to communicate when choosing the option Orwak Connect. It is a modem-based communication service enabling the baler to send updates and alerts to the caretaker as well as vital information and bale statistics to the web portal.

Complies with the EN 16500:2014 safety requirement standard for vertical balers

## DIMENSIONS & SPECIFICATIONS

DIMENSIONS				
A	B	C	D	TRANSPORT-HEIGHT
8'4"	54"	40"	79"	6'7"



TECHNICAL SPECIFICATIONS								
LOADING APERTURE	CYCLE TIME	PRESS FORCE	BALE SIZE	BALE WEIGHT	MACHINE WEIGHT	NOISE LEVEL	PROTECTION CLASS	OPERATING POWER
Width: 40" Height: 18"	40 secs	HP: 17,637 lbs LP: 11,023 lbs	Width: 40" Depth: 32" Height: 32"	Cardboard: Up to 330 lbs Plastic: Up to 420 lbs	1587 lbs	62.3 db (A)	IP 55	Single Phase 115 V. 60 Hz, 15 A

We reserve the right to make changes to specifications without prior notice. Bale/bag/bin weights are dependent upon material type.

## ORWAK NORTH AMERICA, INC.

9200 Globe Center Drive, Suite 130  
Morrisville  
NC 27560, USA  
Phone: +1-800-747-0449  
Email: info@orwakbalers.com

[ORWAKBALERS.COM](http://ORWAKBALERS.COM)

